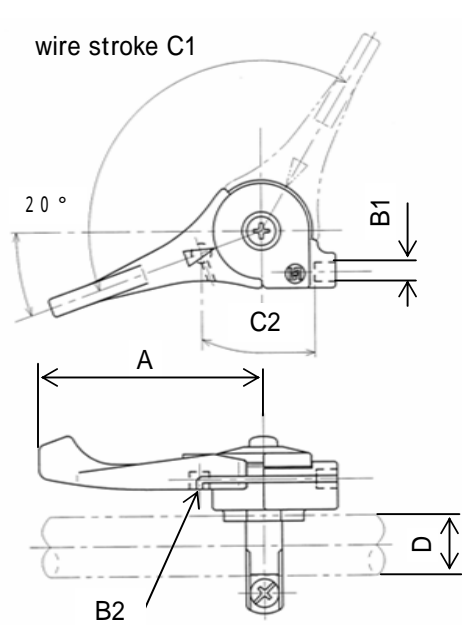


Throttle Lever

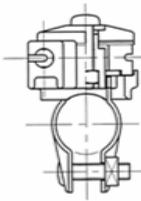
(1) E 350-A TYPE

Feature

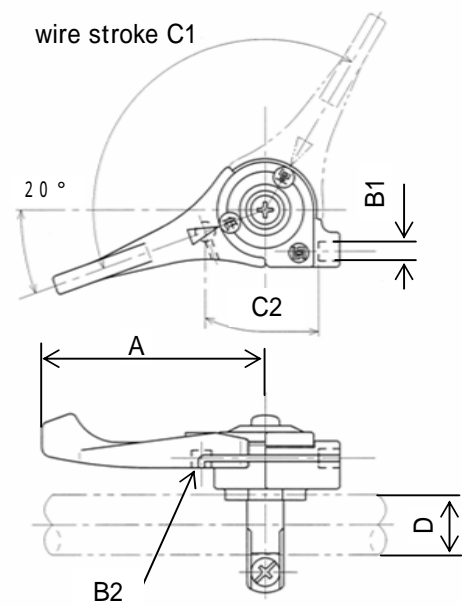
The most widely used throttle lever for engine operation.
They are very suitable throttle lever for agricultural, industrial, and bush cutter engines.



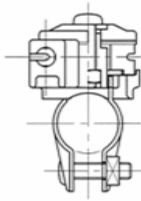
(mm)			
A	lever length	70	
B	outer dia and cable end dia	outer dia B 1	cable end dia B 2
		6	6
C	stroke and main dimensions	stroke C 1	set dimension C 2
		6, 20, 31	36.5
D	mounting dimension	16, 19, 22.2	
		25.4, 27.2	



(2) E 350-B TYPE



(mm)			
A	lever length	70	
B	outer dia and cable end dia	outer dia B 1	cable end dia B 2
		6	6
C	stroke and main dimensions	stroke C 1	set dimension C 2
		6, 20, 31	36.5
D	mounting dimension	16, 19, 22.2	
		25.4, 27.2	

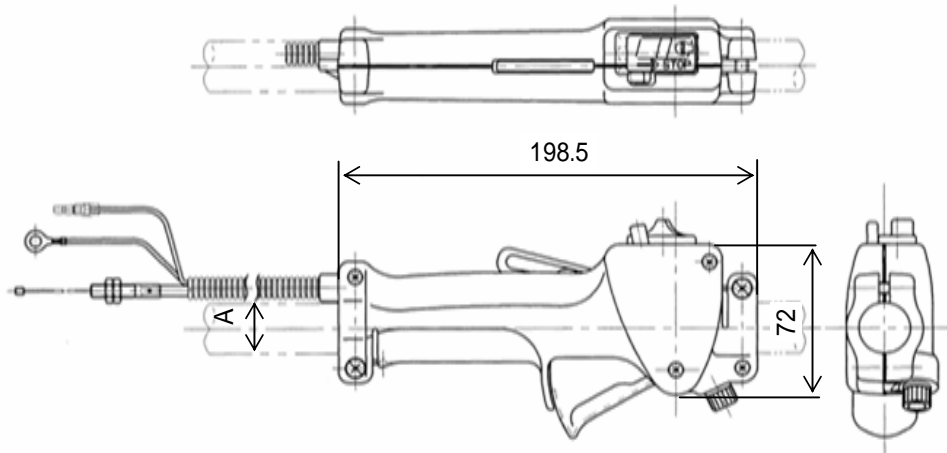


E354-100 TYPE

This throttle lever has been designed especially for bush cutter, while the grip and the lever are incorporated into one body which involves a lever lock mechanism to increase the safety.

Feature

1. The safety-design lever involves the engine stop switch
2. Lock mechanism is mounted.
Without releasing this lock mechanism, the throttle lever cannot be pulled.
3. The grip and the lever are incorporated in one body, which snugly fits in your palm.
4. The lever can be clamped at the position required for engine start.



(mm)

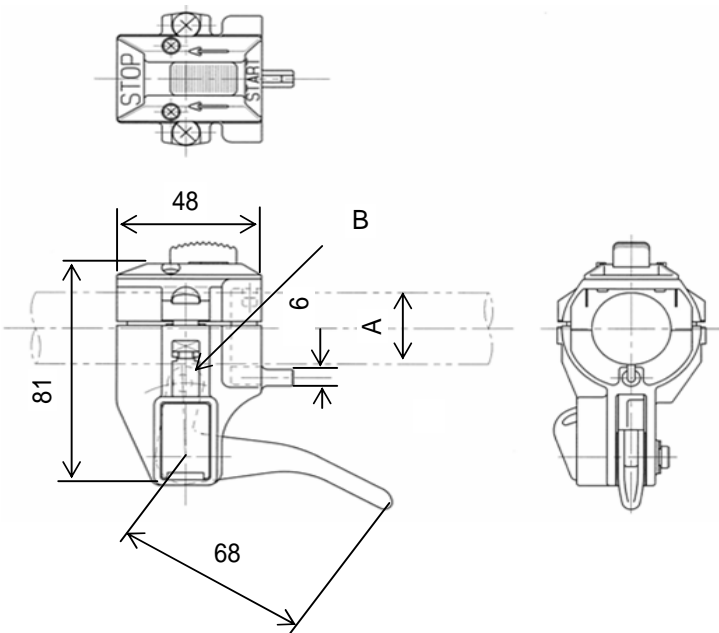
mounting dimension		24、26
inner dia		1.2
cable end dia		6
stroke		minimum 16
stroke	stroke (at lock)	5 ± 1
lead wire		0.5 mm ² x 2
earth terminal		terminal : male / female, ring terminal

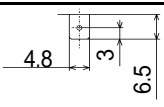
E356 TYPE

This throttle lever has been designed safe, compact and light especially for bush cutter.

Features

- 1, The safety-design lever involves the engine stop switch.
- 2, The lever can be clamped at the position required for engine start.
- 3, Rugged polyacetal body is hardly deformed and is proof against gasoline and chemicals.
- 4, Easy and smooth to handle. Snugly fits in your palm.
- 5, The black, slim exterior matches any bush cutter.



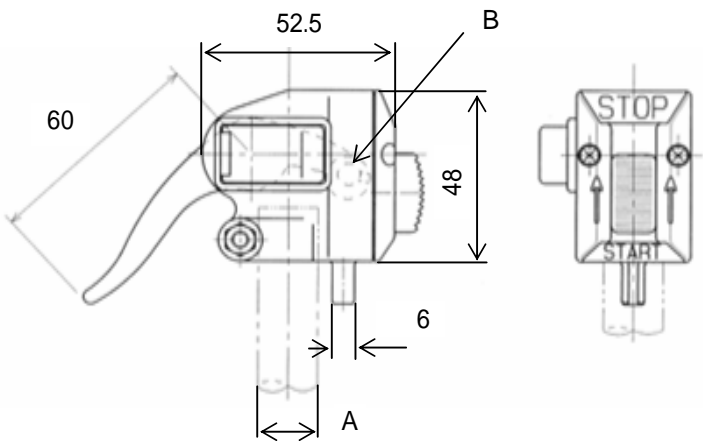
		(mm)
mounting dimension		19、 22.2、 24、 26
inner dia		1.2
cable end dia		6
stroke		12 ~ 15
stroke	stroke (at lock)	3 ± 1
earth terminal		 t=0.4

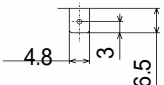
E357-A TYPE

This throttle lever has been designed safe, compact and light especially for bush cutter.

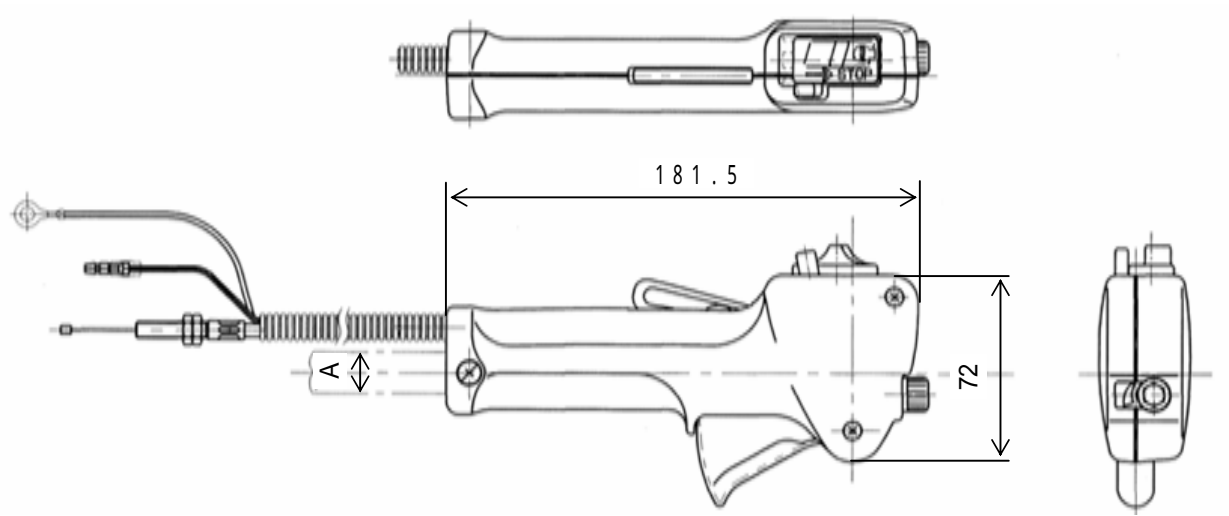
Features

- 1, The safety-design lever involves the engine stop switch.
- 2, The lever can be clamped at the position required for engine start.
- 3, Rugged polyacetal body is hardly deformed and is proof against gasoline and chemicals.
- 4, Easy and smooth to handle. Snugly fits in your palm.
- 5, The black, slim exterior matches any bush cutter.



(mm)		
mounting dimension		15、18、19、20
inner dia		1.2
cable end dia		6
stroke		13 ~ 15
stroke	stroke (at lock)	5 ± 1
earth terminal		 t=0.4

E357-B TYPE



			(mm)
mounting dimension		1 6、1 9、2 0、2 2	
inner dia		1 . 2	
cable end dia		6	
stroke		minimum 1 6	
stroke	stroke (at lock)	5 ± 1	
lead wire		0 . 5 mm ² x 2	
earth terminal		terminal : male / female, ring terminal	