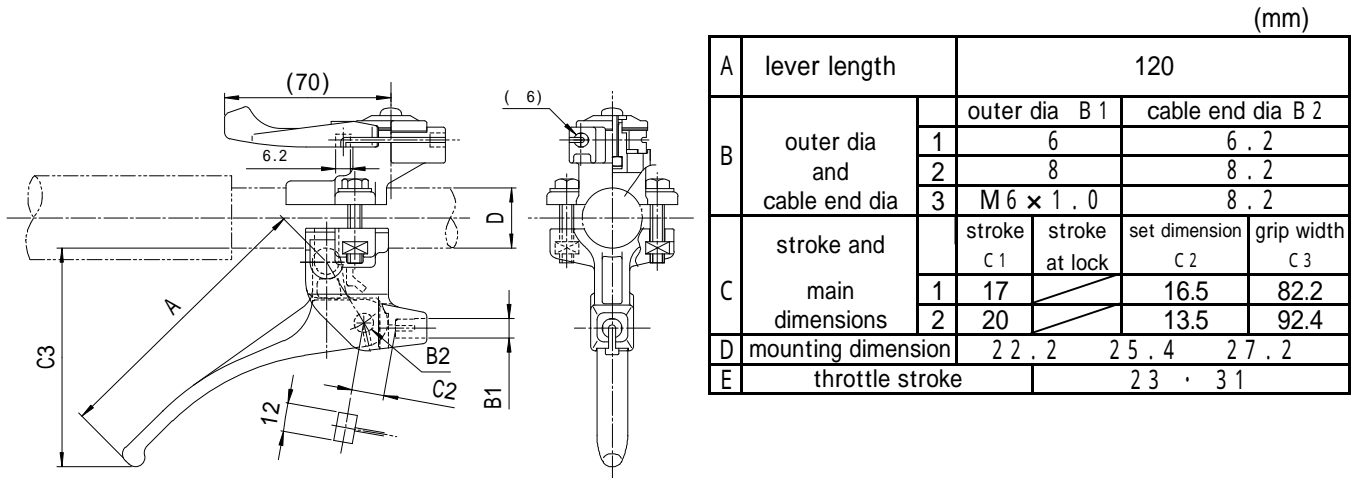


Combination Lever

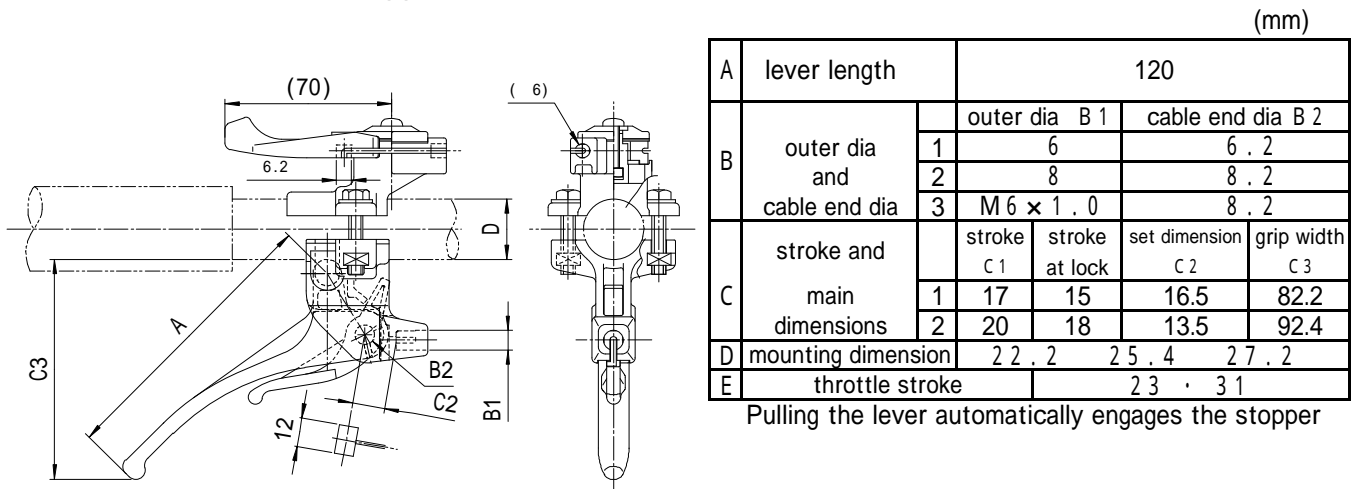
Features

The product is made of plastic parts and the rust problem was solved.
 It became 30-40% lighter than conventional products made pressed steel.
 The lever and body use nylon resin and maintain sufficient strength.
 They are very suitable for clutches, brake assemblies for small tillers, rice transplanter, material handlers and carts.

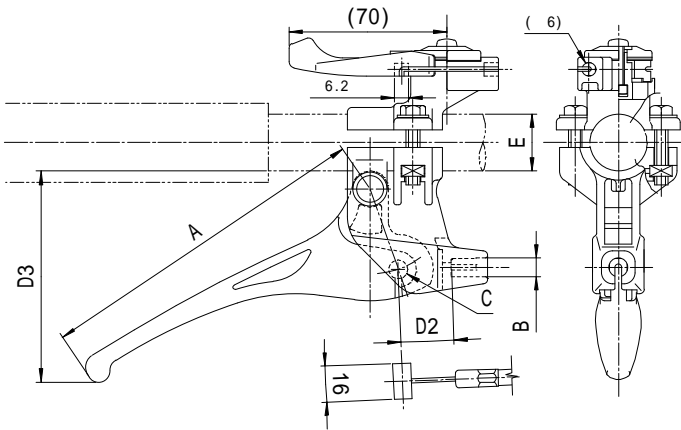
(1) E 2 2 6 TYPE (without stopper)



(2) E 2 2 7 TYPE (auto stopper)



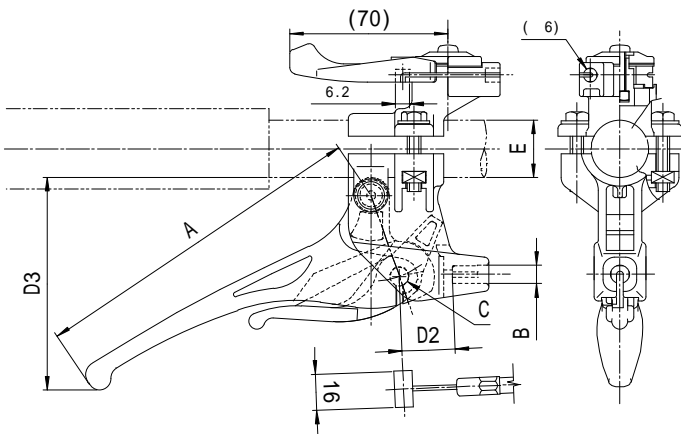
(3) E 2 3 6 TYPE (without stopper)



(mm)

A	lever length	150			
B	outer dia	8			
C	cable end dia	8 . 2			
D	stroke and main dimensions	stroke D1	stroke at lock	set dimension D2	grip width D3
		1	17	26.6	84.1
		2	20	23.5	94.5
		3	24	19.5	107.5
E	mounting dimension	2 2 . 2	2 5 . 4	2 7 . 2	
F	throttle stroke	2 3 · 3 1			

(4) E 2 3 7 TYPE (auto stopper)

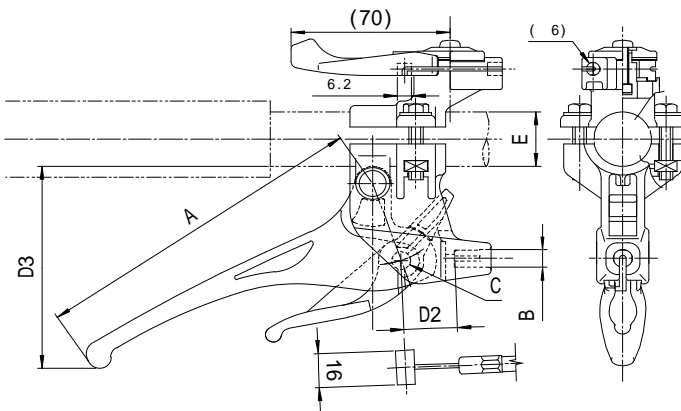


(mm)

A	lever length	150				
B	outer dia	8				
C	cable end dia	8 . 2				
D	stroke and main dimensions	stroke D1	stroke at lock	set dimension D2	grip width D3	
		1	17	15	26.6	84.1
		2	20	18	23.5	94.5
		3	24	22	19.5	107.5
E	mounting dimension	2 2 . 2	2 5 . 4	2 7 . 2		
F	throttle stroke	2 3 · 3 1				

Pulling the lever automatically engages the stopper

(5) E 2 3 8 TYPE (manual stopper)

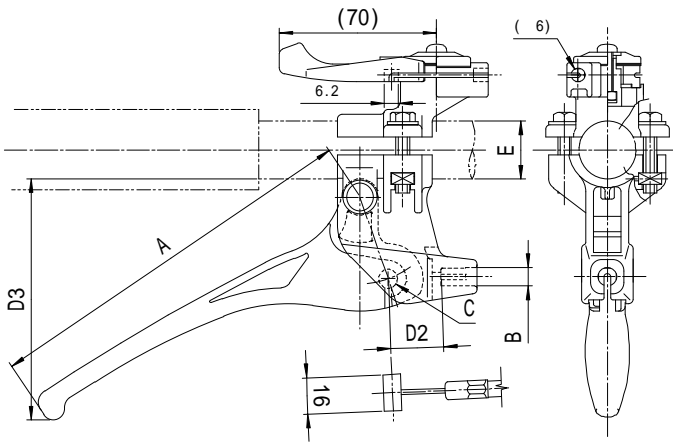


(mm)

A	lever length	150				
B	outer dia	8				
C	cable end dia	8 . 2				
D	stroke and main dimensions	stroke D1	stroke at lock	set dimension D2	grip width D3	
		1	17	15	26.6	84.1
		2	20	18	23.5	94.5
		3	24	22	19.5	107.5
E	mounting dimension	2 2 . 2	2 5 . 4	2 7 . 2		
F	throttle stroke	2 3 · 3 1				

Push the stopper to engage it

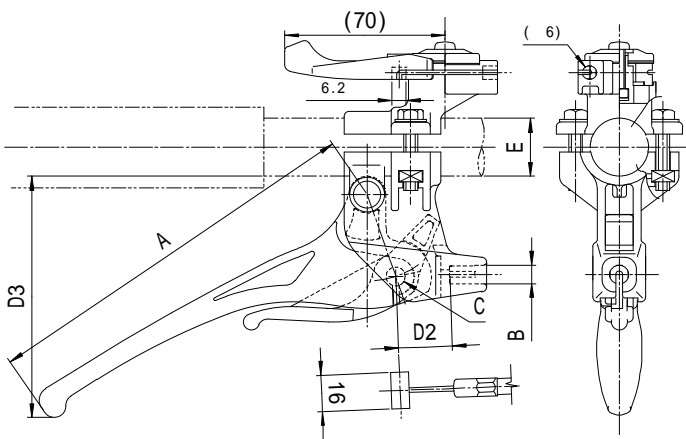
(6) E 2 4 6 TYPE (without stopper)



(mm)

A	lever length	170			
B	outer dia	8			
C	cable end dia	8.2			
D	stroke and main dimensions	stroke D1	stroke at lock	set dimension D2	grip width D3
		1	17	26.6	94.1
		2	20	23.5	106
		3	24	19.5	121
E	mounting dimension	22.2	25.4	27.2	
F	throttle stroke	23 · 31			

(7) E 2 4 7 TYPE (auto stopper)

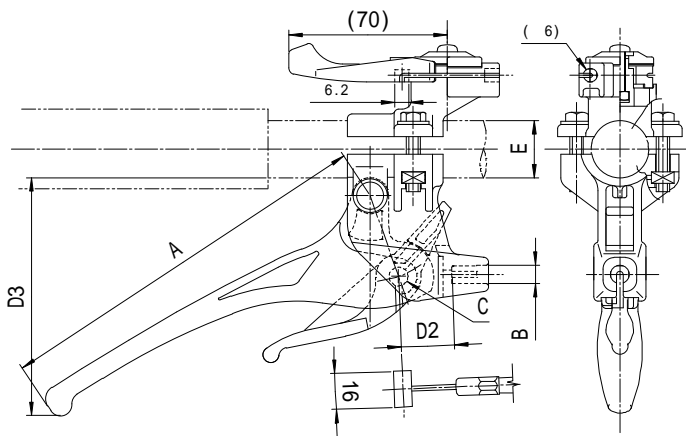


(mm)

A	lever length	170				
B	outer dia	8				
C	cable end dia	8.2				
D	stroke and main dimensions	stroke D1	stroke at lock	set dimension D2	grip width D3	
		1	17	15	26.6	94.1
		2	20	18	23.5	106
		3	24	22	19.5	121
E	mounting dimension	22.2	25.4	27.2		
F	throttle stroke	23 · 31				

Pulling the lever automatically engages the stopper

(8) E248 TYPE (manual stopper)



(mm)

A	lever length	170				
B	outer dia	8				
C	cable end dia	8.2				
D	stroke and main dimensions	stroke D1	stroke at lock	set dimension D2	grip width D3	
		1	17	15	26.6	94.1
		2	20	18	23.5	106
		3	24	22	19.5	121
E	mounting dimension	22.2	25.4	27.2		
F	throttle stroke	23 · 31				

Push the stopper to engage it